

SAMPLE RESIDENTIAL DECK DESIGNS

"COST EFFICIENT DESIGNS FOR A LONG LASTING SOLUTION!"

DESIGNED FOR USE WITH:

TRIMAX™ STRUCTURAL LUMBER

MADE BY: TRIMAX BUILDING PRODUCTS

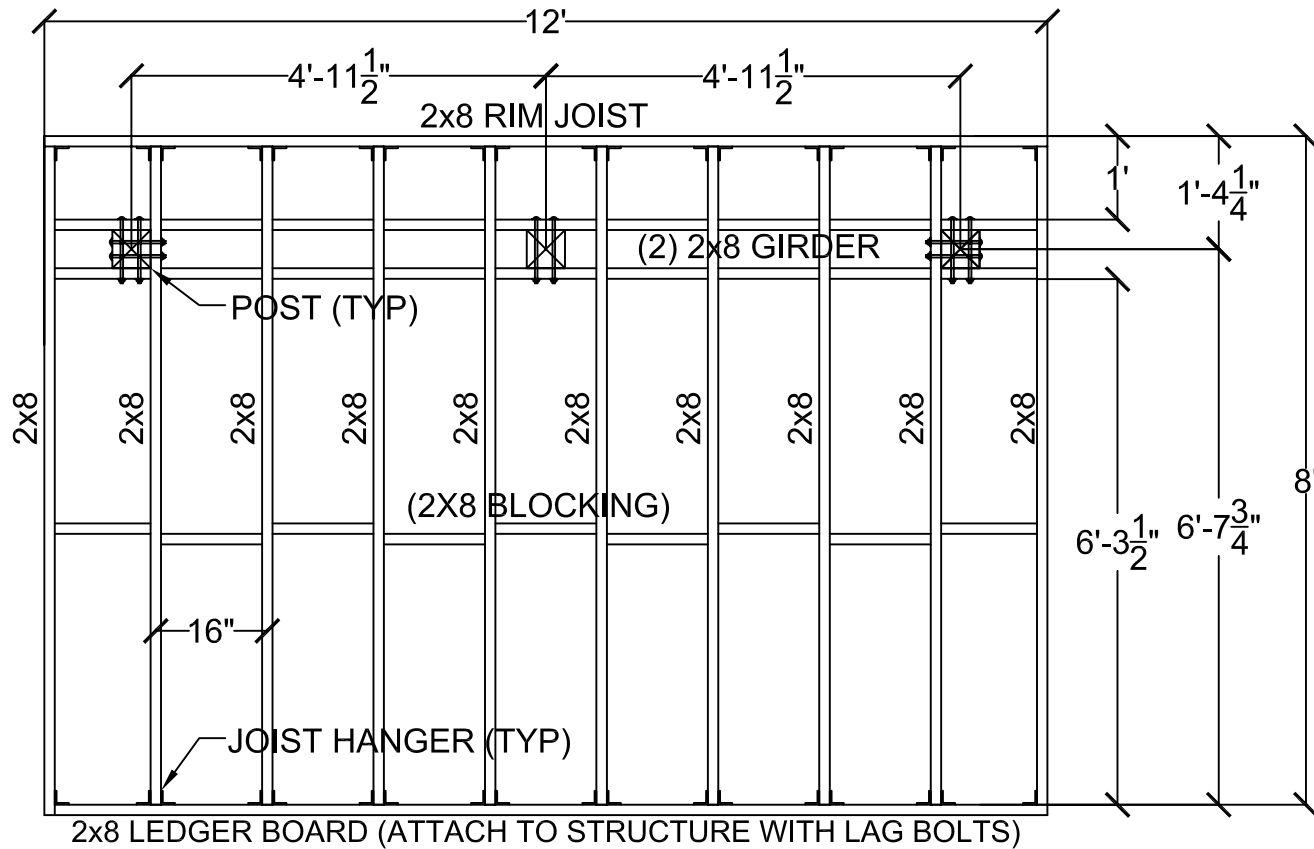
1-800-666-5207

<http://www.trimaxbp.com>

DESIGN NOTES

- PLEASE SEEK LOCAL BUILDING CODE APPROVAL PRIOR TO START OF CONSTRUCTION
- JOIST SPACING IS 16" ON CENTER FOR FOLLOWING PAGES.
- WHEN TURNING DECKING ON 45° ANGLE TO JOISTS JOIST SPACING SHOULD BE 4" LESS
- BLOCKING MUST BE INSTALLED WHEN JOIST SPAN IS GREATER THEN 6'-0"
- DECKS DESIGNED WITH 40PSF LIVE LOAD, 10 PSF DEAD LOAD
- DESIGNS ARE NOT CONSTRUCTION DRAWINGS, PLEASE CONSULT STRUCTURAL ENGINEER FOR ENGINEERING SERVICES
- QUANTITY TAKEOFFS DO NOT ALLOW FOR BLOCKING FOR STAIRS OR RAILING.
PLEASE ALLOT EXTRA MATERIAL FOR ADDITIONAL BLOCKING NEEDS





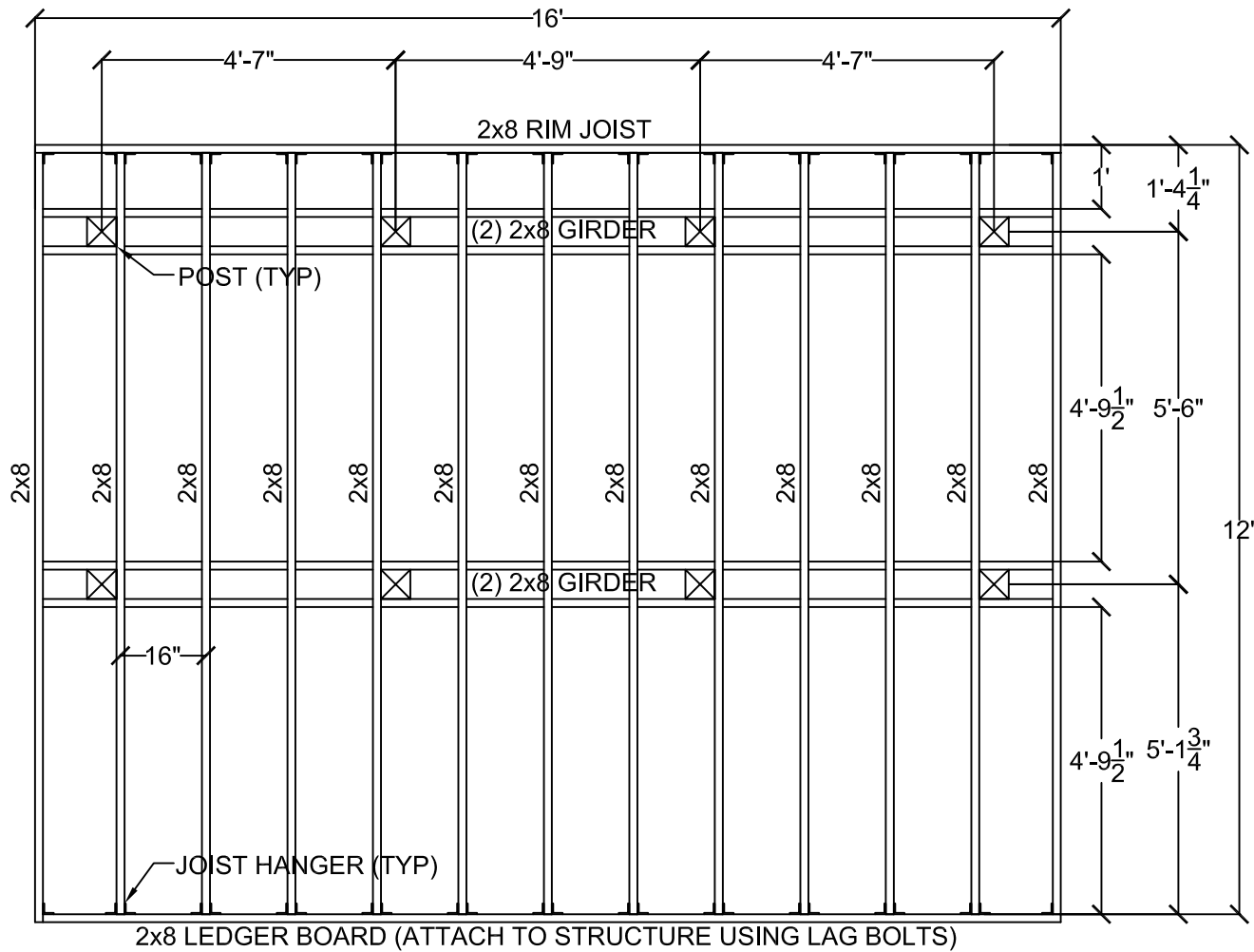
FRAMING MATERIALS FOR A 8'-0" X 12'-0" DECK

DESCRIPTION	SIZE	QUANTITY	LENGTH
LEDGER BOARD/RIM JOIST	2X8	1	24'-0"
GIRDERS	2X8	1	24'-0"
BLOCKING	2X8	1	16'-0"
JOISTS	2X8	5	16'-0"
POSTS	6X6	3	????

BLOCKING IS NEEDED FOR SPANS GREATER THEN 6'-0"

8'-0" X 12'-0" DECK
 MATERIAL- TRIMAX™ STRUCTURAL LUMBER



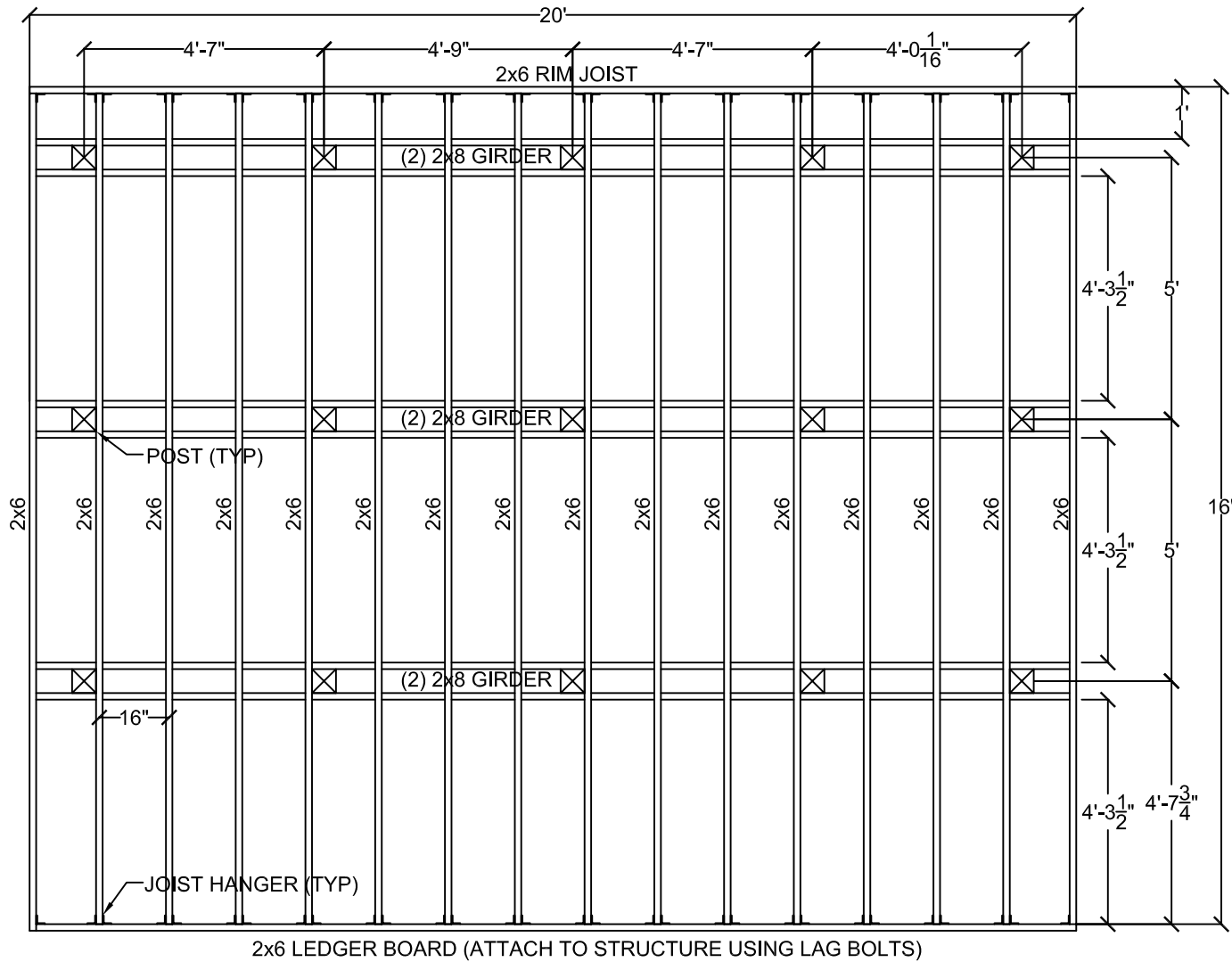


FRAMING MATERIALS FOR A 12'-0" X 16'-0" DECK

DESCRIPTION	SIZE	QUANTITY	LENGTH
LEDGER BOARD	2X8	1	16'-0"
RIM JOIST	2X8	1	16'-0"
GIRDERS	2X8	4	16'-0"
JOISTS	2X8	7	24'-0"
POSTS	6X6	8	????

12'-0" X 16'-0" DECK
 MATERIAL- TRIMAX™ STRUCTURAL LUMBER



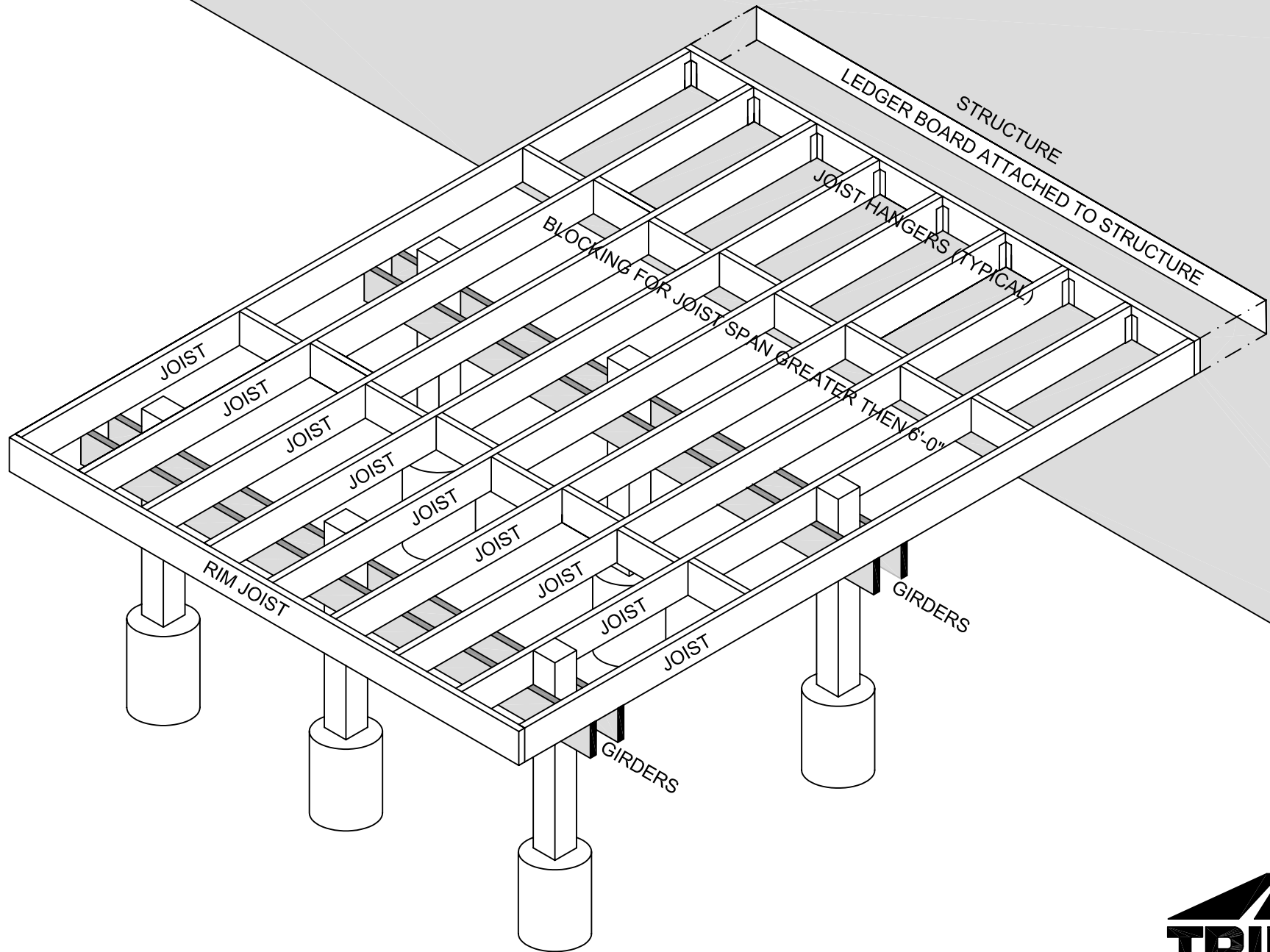


FRAMING MATERIALS FOR A 16'-0" X 20'-0" DECK

DESCRIPTION	SIZE	QUANTITY	LENGTH
LEDGER BOARD	2X6	1	20'-0"
RIM JOIST	2X6	1	20'-0"
GIRDERS	2X8	6	20'-0"
JOISTS	2X6	16	16'-0"
POSTS	6X6	15	????

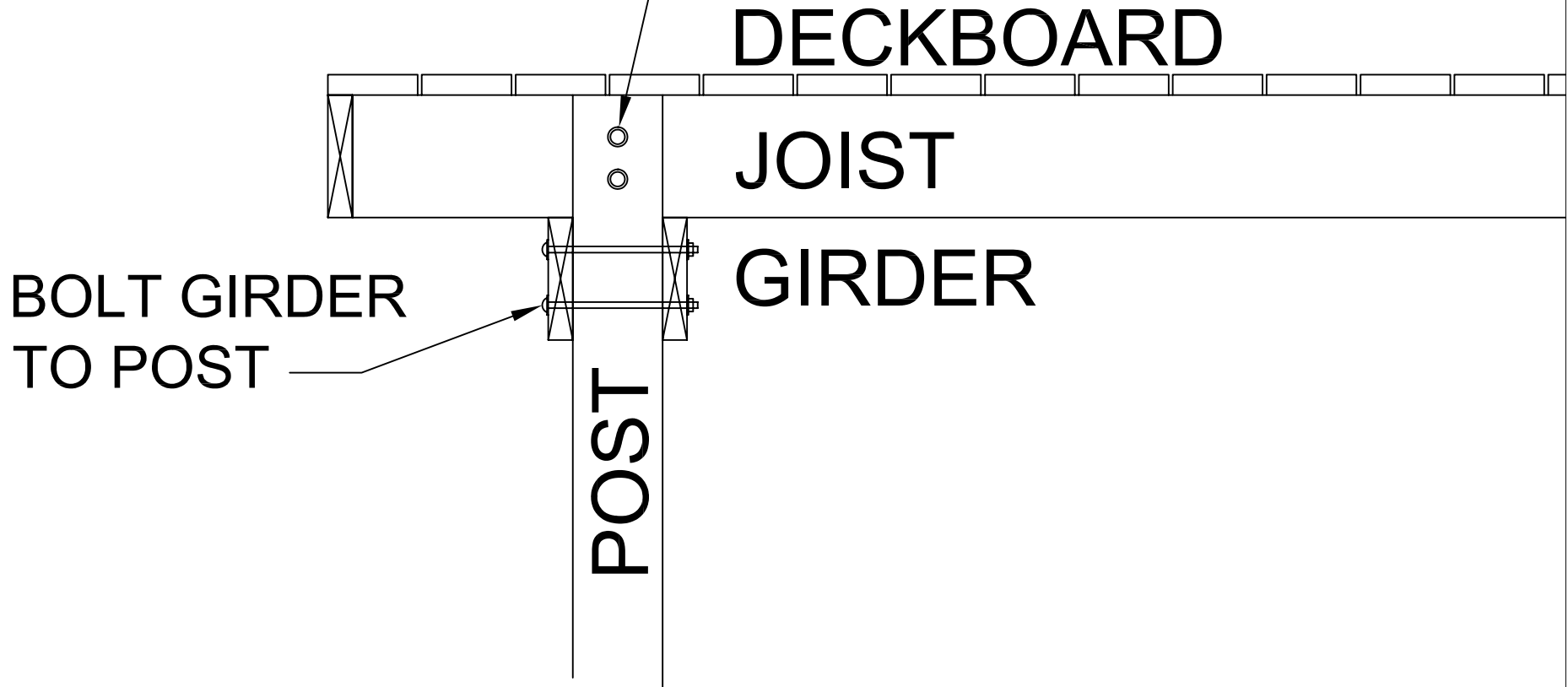
16'-0" X 20'-0" DECK
 MATERIAL- TRIMAX™ STRUCTURAL LUMBER





SCHEMATIC DIAGRAM OF DECK COMPONENTS

EXTEND POST
TO TOP OF JOIST
FASTEN POST TO
JOIST WITH BOLTS



BOLT GIRDER
TO POST

DECKBOARD

JOIST

GIRDER

POST

DETAIL ANCHORING OF DECK TO POST TO
RESIST POTENTIAL UPWARD LIFT